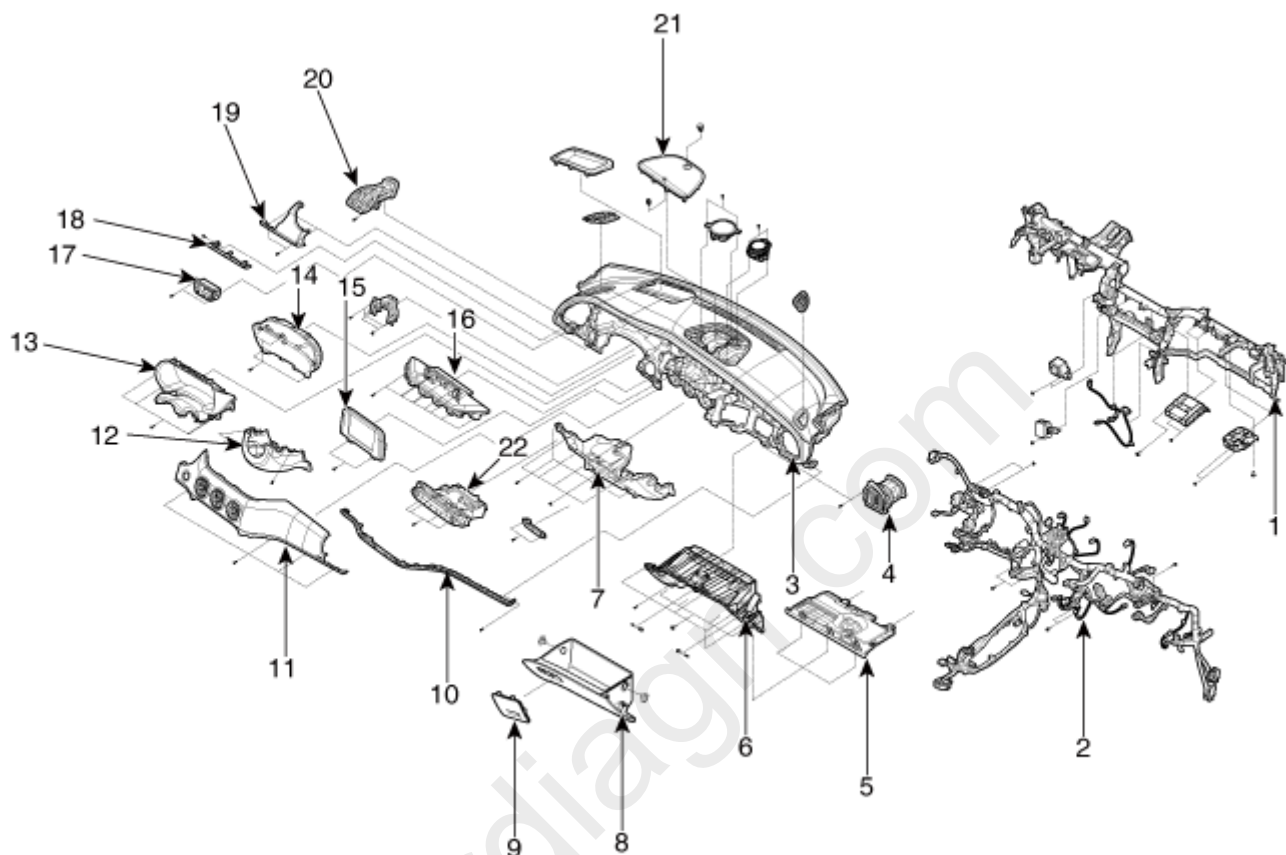


Please rate this document after reviewing at the bottom of this page.

## COMPONENTS



- |                                    |                                  |
|------------------------------------|----------------------------------|
| 1. Cowl cross member bar           | 12. Steering column lower shroud |
| 2. Main wiring                     | 13. Cluster fascia upper panel   |
| 3. Main crash pad                  | 14. Cluster assembly             |
| 4. Side air vent duct [RH]         | 15. A.V.N monitor                |
| 5. Crash pad under cover [RH]      | 16. monitor fascia panel         |
| 6. Crash pad lower panel [RH]      | 17. Crash pad side switch        |
| 7. Crash pad center lower cover    | 18. Crash pad garnish [LH]       |
| 8. Glove box housing               | 19. Crash pad driver side panel  |
| 9. Fuse A/S cover                  | 20. Side air vent duct [LH]      |
| 10. Crash pad garnish [RH]         | 21. Center speaker grille        |
| 11. Crash pad passenger side panel |                                  |

**\* Thanks for your cooperation for the more quality. Please surely rate this document before closing.**